



54608

X-ACT CONTOUR

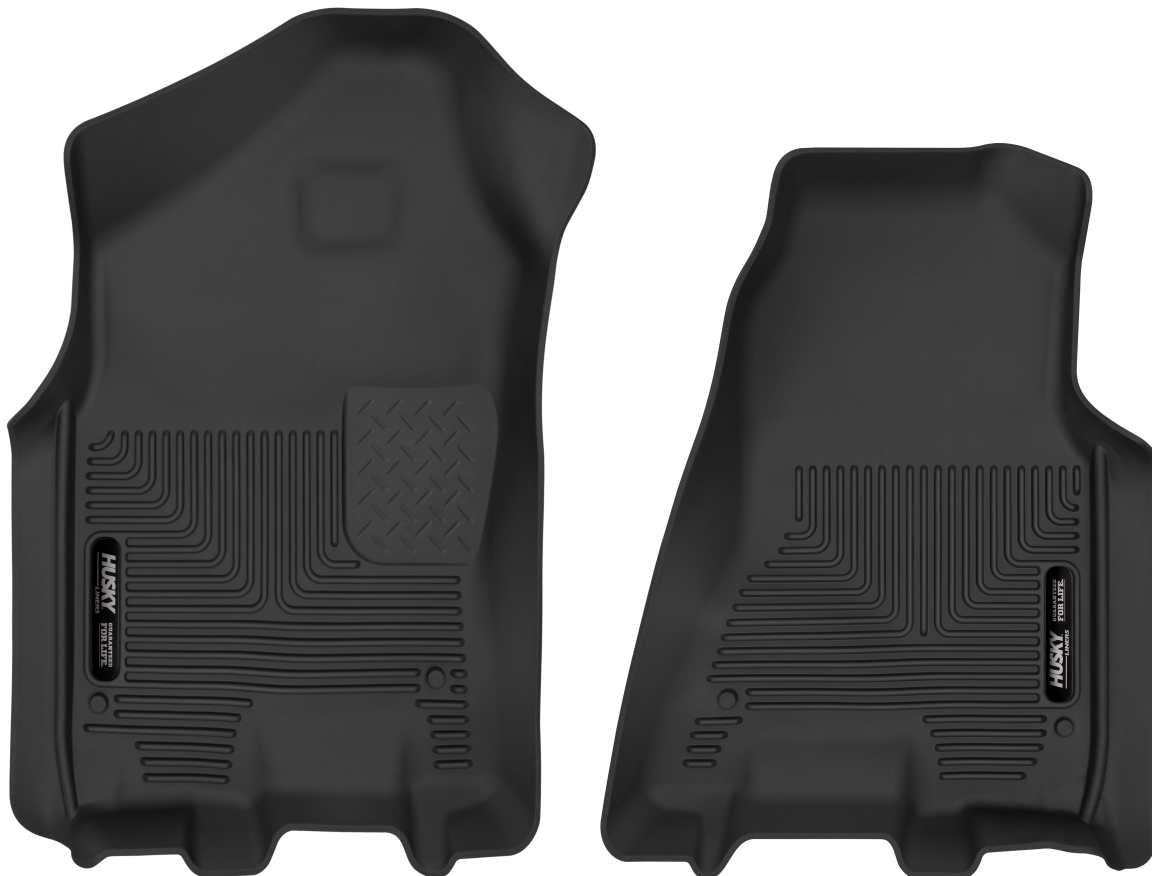
FLOOR LINERS

CARE AND USE INSTRUCTIONS – PN: 54608

Thank you for selecting Xact Contour™ Front Floor Liners from Husky Liners Inc. Your new front floor liners are custom molded to fit your specific vehicle's floor board. The liners are made to take the place of your factory floor mats. **For correct fit, it is necessary to remove the factory floor mats before installing your new floor liners.** However, do not remove the factory-installed carpeting.

When installing your liners, make sure that the floor mat retention hooks located in your vehicles floor boards install thru the retention hole recess in your floor liners. Simply align the liners over the posts and push down to seat the liner.

Your liners are made from an engineering resin that is lightweight and extremely tough and durable. The easiest way to clean your liners is with a damp cloth or sponge and soap and water. Windex®, 409® and ArmorAll® type cleaners work as well.





X-ACT CONTOUR

FLOOR LINERS

CARE AND USE INSTRUCTIONS – PN:54608

Thank you for selecting an X-act Contour™ 2nd Seat Floor Liner from Husky Liners Inc. Your new floor liner is custom molded to fit your specific vehicle's floor board. The liner is made to take the place of your factory floor mats. **For correct fit, it is necessary to remove the factory floor mats before installing your new floor liner.** However, do not remove the factory-installed carpeting.

Your liner is made from an engineering resin that is lightweight and extremely tough and durable. The easiest way to clean your liner is with a damp cloth or sponge and soap and water. Windex®, 409® and ArmorAll® type cleaners work as well.



TO PRIOR TO INSTALLING YOUR 2ND SEAT LINER, FOLD UP THE REAR SEATS AND SLIDE BOTH FRONT ROW SEATS COMPLETELY FORWARD. WITH THIS DONE, INSTALL THE LINER POSITIONING IT AS SHOWN ABOVE. ONCE THE LINER IS INSTALLED, REPOSITION THE FRONT SEATS AS DESIRED. NOTE THAT THE LINER TUCKS UNDER THE AIR DUCTS THAT ARE LOCATED UNDER THE BACK OF THE FRONT SEATS (SEE PHOTO ON THE BACK PAGE). THE 2ND SEAT LINER CAN BE TRIMMED TO ALLOW ACCESS TO THE CARGO TIE-DOWN HOOKS IN THE TRUCK FLOOR. TO ACCESS THE HOOK(S), TRIM AWAY THE MATERIAL FROM INSIDE THE RIB (SHOWN CIRCLED ABOVE).

LINER TUCKS UNDER AIR DUCTS UNDER THE FRONT SEATS

